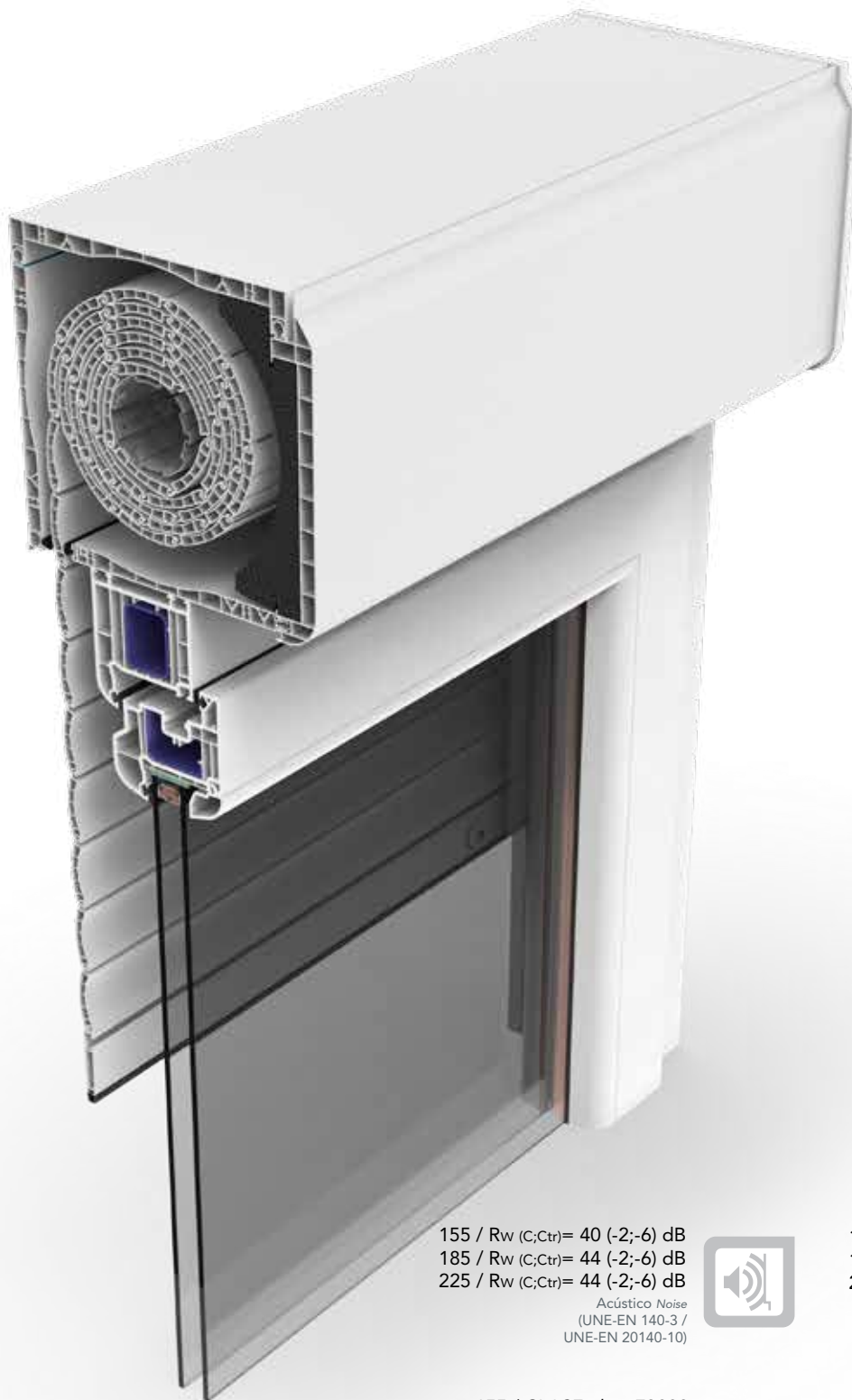


REGIBLOCK



155 / R_w (C;Ctr)= 40 (-2;-6) dB
 185 / R_w (C;Ctr)= 44 (-2;-6) dB
 225 / R_w (C;Ctr)= 44 (-2;-6) dB
 Acústico Noise
 (UNE-EN 140-3 /
 UNE-EN 20140-10)



155 / CLASE class E3000
 185 / CLASE class E3000
 225 / CLASE class E3000
 Estanqueidad al agua
 Water resistance
 (UNE-EN 1027)



M1
 (UNE 23727-90 1R)
 Informe de clasificación
 Classification report
 N° 7000 AITEX



155/ 0,83 W/m²K
 185/ 0,80 W/m²K
 225/ 1,10 W/m²K
 Transmisión térmica U
 Thermal transmission
 (UNE-EN ISO 10077-2)



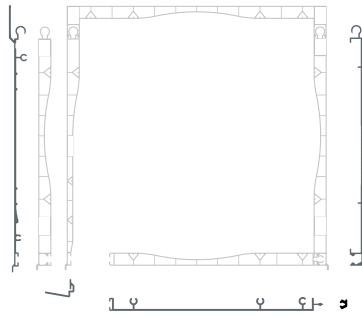
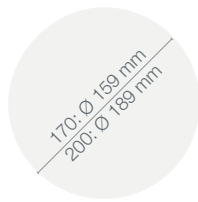
155 CLASE class 4
 185 CLASE class 4
 225 CLASE class 3
 Permeabilidad al aire
 Air permeability
 (UNE-EN 1026)



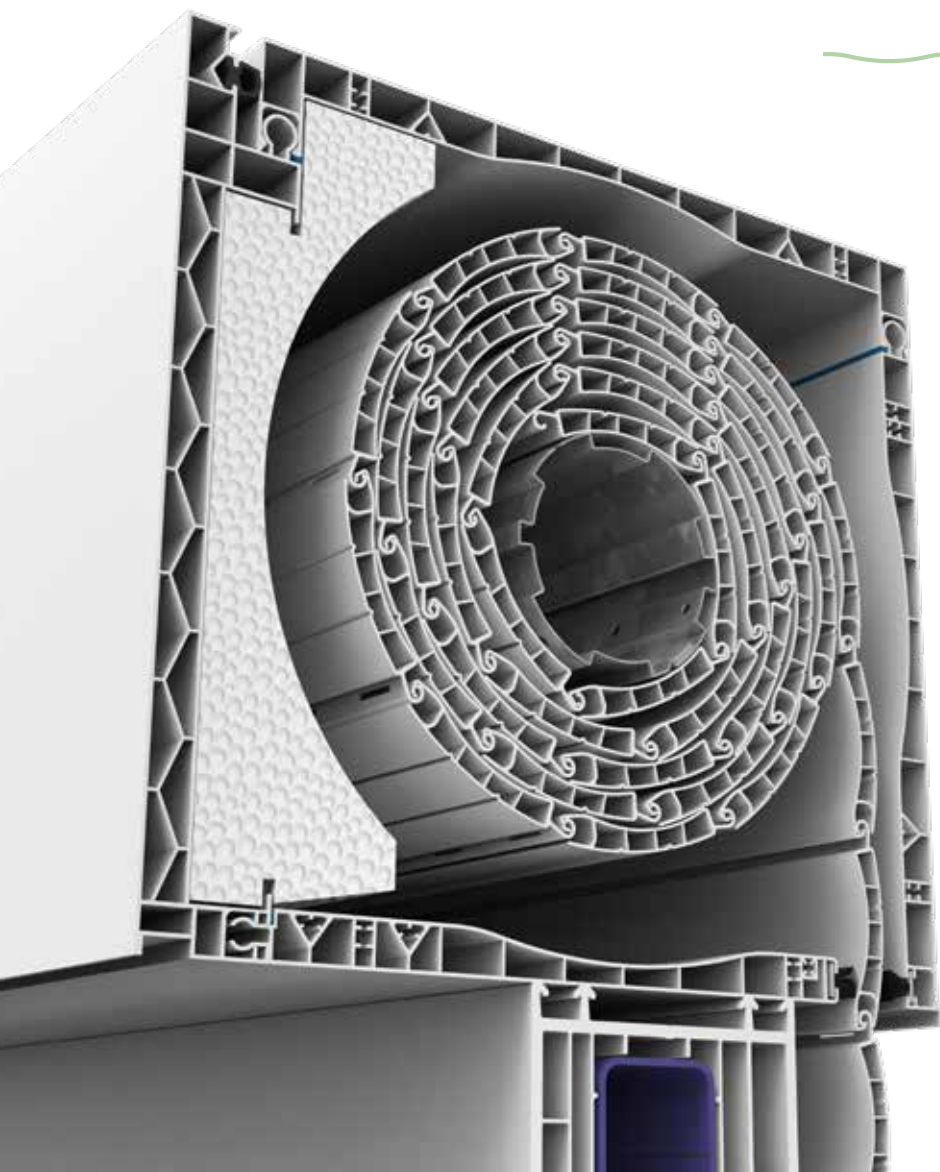
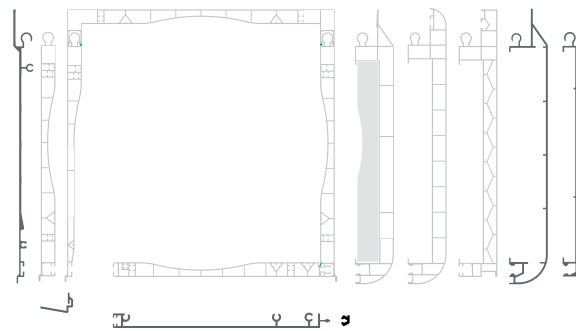
P3: 3000 Pa
 Resistencia al viento
 Wind load resistance
 (UNE-EN 12211)



170-200



155-185



225

